

# Inmagic<sup>®</sup> DB/Text<sup>®</sup> *WebPublisher PRO* v10.00

## Installation and Upgrade Notes

Thank you for purchasing Inmagic<sup>®</sup> DB/Text<sup>®</sup> *WebPublisher PRO*. This document is for new *WebPublisher PRO* installations and for sites that are upgrading to version 10.00.

*WebPublisher PRO* lets you add, update, and/or delete records in Inmagic<sup>®</sup> DB/TextWorks<sup>®</sup> textbases from a Web browser, making your textbases interactive over an intranet, extranet, or the Internet.

*WebPublisher PRO* combines searching power with Extensible Markup Language (XML) capabilities. This allows you to integrate your DB/TextWorks textbases with other applications and create interactive forms using standard third-party tools (such as, Microsoft FrontPage).

This document has the following sections:

- “About Installing *WebPublisher PRO*” on page 2
- “System Requirements” on page 2
- “Before You Begin” on page 3
- “*WebPublisher PRO* Virtual Directories” on page 4
- “Installing *WebPublisher PRO* v10” on page 4
- “Setting Windows Permissions” on page 13
- “Testing *WebPublisher PRO*” on page 20
- “Documentation” on page 21

## About Installing *WebPublisher PRO*

---

To use *WebPublisher PRO*, you need to install two separate products: Inmagic DB/TextWorks and *WebPublisher PRO*. It does not matter which one you install first, and they can be on different machines. To install DB/TextWorks, refer to the installation notes provided with that product.

## System Requirements

---

We recommend the following to use the full Read-Write capabilities of *WebPublisher PRO*:

- Intel Pentium processor, 500 MHz or higher.
- One of the following operating systems:
  - Windows 2003 Server with Service Pack 1.
  - Windows 2000 Professional with Service Pack 4.
  - Windows 2000 Server with Service Pack 4.
  - Windows XP Professional with Service Pack 2.
- 512 MB RAM or greater.
- 10 MB available disk space (to install), 100 MB+ available (working storage).
- Microsoft Internet Information Services (IIS) version 5.0 or later.
- Microsoft .NET Framework Version 2.0 is required for the Inmagic Choices Browser (InmagicBrowse virtual directory). You can download the .NET Framework from the Microsoft Downloads page at [www.microsoft.com](http://www.microsoft.com).
- Microsoft Internet Explorer version 6.0 or later installed on the server (to support XML functionality).
- TCP/IP installed and running.
- An IP address and/or a domain name. If the server is connected to the Internet, the IP address needs to be registered.
- ISAPI or CGI. (*WebPublisher PRO* supports both. We recommend ISAPI for better performance.)
- *WebPublisher PRO* v10 requires DB/TextWorks v10.

## Before You Begin

---

- **Exit all Windows applications.** Exit all Windows applications before installing the *WebPublisher PRO* product.
- **Remote access software.** Do not use remote access software to install this product. The Windows Installer service may encounter problems when interacting with remote access software (especially Terminal Services), which can result in various errors and the inability to install the product. Install the product on your machine directly instead.
- **Read-Write access.** Make sure you have full Read-Write access (for example, Administrator access) to the *WebPublisher PRO* installation and Windows System folders.
- **WebPublisher PRO serial number.** Locate your *WebPublisher PRO* serial number. You will be asked for the serial number during installation.
- **Troubleshooting.** There are several troubleshooting references that are available to you to help resolve issues you may be encountering when installing *WebPublisher PRO*.
  - Inmagic Knowledgebase – The Inmagic Knowledgebase is available 24x7. The knowledgebase may be accessed at <http://support.inmagic.com/supbase3.htm>.
  - Inmagic Technical Support – You may call or email Inmagic Technical Support for assistance.  
Email: [support@inmagic.com](mailto:support@inmagic.com)  
Phone: 800-229-8398, Press 3.
- **If you are upgrading –**
  - **WebPublisher PRO serial number.** Locate your *WebPublisher PRO* serial number. You will be asked for the serial number during installation. If you did not receive a new serial number, use the serial number supplied with your earlier version. If you are upgrading from an electronic download (instead of a CD), you also need a password, which should have been provided to you with the upgrade notification.
  - **DB/TextWorks and WebPublisher PRO users.** Be sure all users have exited the software before upgrading.
  - **Compatibility.** *WebPublisher PRO* version 10.00 must be used with DB/TextWorks version 10.00.
  - **Destination Folders.** To successfully upgrade, you must select the destination folder where the *WebPublisher PRO* that you are upgrading was installed.

## **WebPublisher PRO Virtual Directories**

---

*WebPublisher PRO* requires two virtual directories:

dbtw-wpd - mapped to the *WebPublisher PRO* folder

InmagicBrowse – mapped to the InmagicBrowse subfolder in the *WebPublisher PRO* installation folder. This is used and required for the index and validation list browsing.

The .NET Framework v2.0 is required for both virtual directories. Therefore, the installer will register both of the virtual directories to the .NET Framework v2.0.

These virtual directories are created by the Inmagic *WebPublisher PRO* installer.

You will be prompted to select the website where the installer should create these virtual directories during the installation.

If the installer fails to create these virtual directories, an error message will be displayed. Refer to the Inmagic Knowledgebase or contact Inmagic Technical Support for assistance.

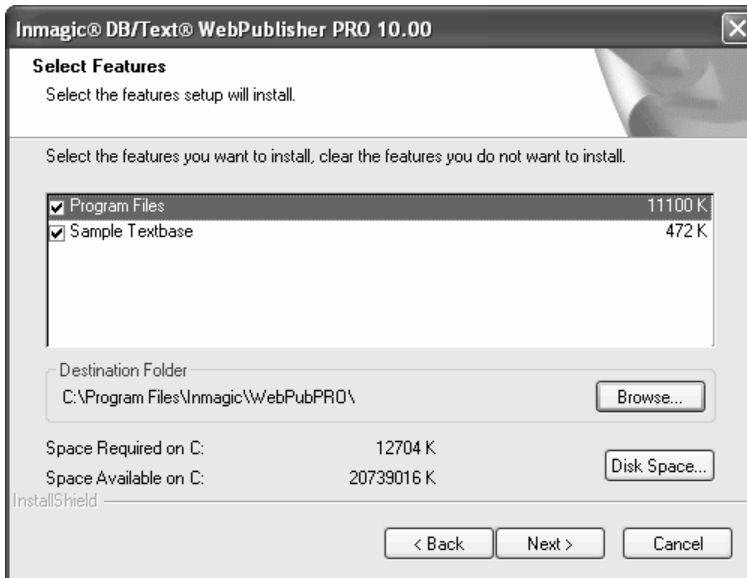
## **Installing WebPublisher PRO v10**

---

### **To install WebPublisher PRO v10**

1. Directly on the Web server, log in with Administrator privileges. It is recommended that *WebPublisher PRO* not be installed using a remote desktop.
2. If you are upgrading, stop IIS (the World Wide Web Publishing Service) using the Services option through the Windows Computer Management window.
3. Depending on your situation, do the following:
  - If you are installing from the Inmagic *WebPublisher PRO* Setup CD-ROM, insert it in the machine's drive. Setup should automatically start. If it does not, open Windows Explorer and from the installation CD-ROM, double-click **Setup.EXE**.
  - If you downloaded the *WebPublisher PRO* ZIP file, you must first unzip it to a temporary folder, then, from within that folder, double-click **Setup.EXE** to launch the program to install the product.
4. If you do not have Microsoft .NET Framework Version 2.0 installed, Setup will detect this and display a notification message. You must exit Setup, install Microsoft .NET Framework Version 2.0, and then run Setup again.
5. If Internet Explorer 6.0 or later is not installed on this machine, a notification message appears and asks if you want to continue with Setup. You can continue, but note that *WebPublisher PRO* will not have XML functionality, which means that editing over the Web will not work. If this is acceptable, click **Yes**. Otherwise, click **No** and install Internet Explorer 6.0 or later, then run Setup again.
6. On the Welcome dialog box, click **Next**.
7. On the License Agreement dialog box, read the license agreement, then respond appropriately.
8. On the Customer Information dialog box, enter your name, the company name, and the *WebPublisher PRO* serial number, as necessary, then click **Next**.

9. On the Select Features dialog box:
  - For Features, accept or clear the check boxes, as appropriate:
    - ◆ **Program Files.** Installs *WebPublisher PRO* version 10.00.
    - ◆ **Sample Textbase.** Installs the *Cars* sample textbase supplied with *WebPublisher PRO*.



- For Destination Folder, specify the folder on the Web server in which you want *WebPublisher PRO* installed (for example, C:\Program Files\Inmagic\WebPubPRO\). You can accept the default location or click **Browse** to change it.

---

**Note for upgrade installations:** To successfully upgrade your existing *WebPublisher PRO*, you **must** select the destination folder where *WebPublisher PRO* was originally installed. If a different folder is selected, a new installation will be created.

---

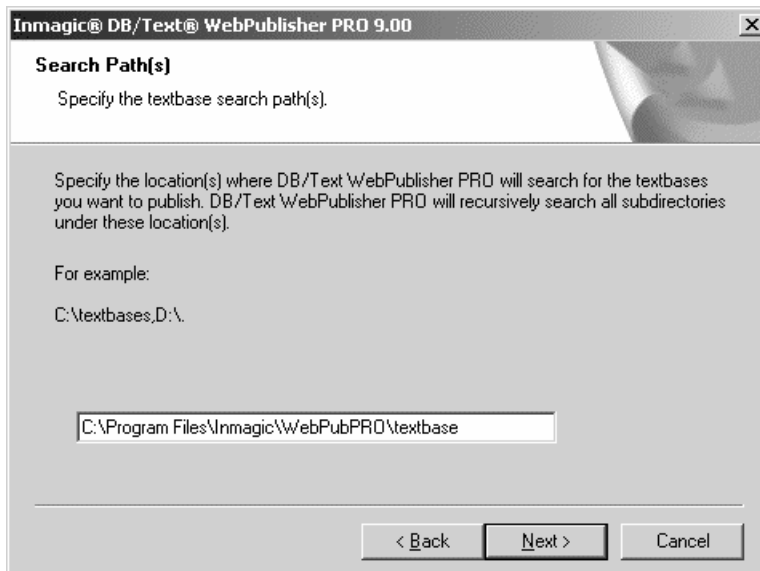
Click **Next**.

10. On the Search Path(s) dialog box, specify one or more locations where you want *WebPublisher PRO* to search for the textbases you will publish. When necessary, *WebPublisher PRO* can recursively search all subfolders under those locations when a query is submitted.

---

**Note:** You must give the account used by *WebPublisher PRO* Full Control access to any folder in which a textbase you want to modify using *WebPublisher PRO* is located. If the DBTW-WPD virtual directory is/will be using Anonymous access, the account defaults to IUSR\_<machine>. If the virtual directory is/will be using Basic or Integrated Windows Authentication, the account is the user's login.

---



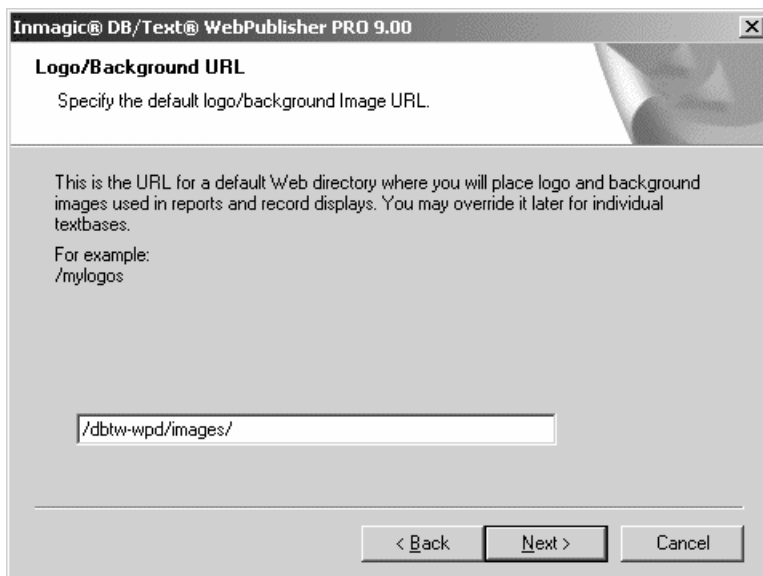
Use a comma to separate multiple locations. If you specify a machine other than the Web server, use the Universal Naming Convention (UNC) folder name instead of a drive letter. For example:

C:\WEBPUB\TEXTBASE\,C:\DATA,\\SERVER2\TBS

The locations you specify are written to an initialization file called DBTWUPB.INI, located in the installation folder. Later, you can edit that file to add or change locations.

Click **Next**.

11. On the Logo/Background URL dialog box, type the URL for a default Web virtual directory where you will place logo and background image files used on forms.



For example, if you keep images in the MYLOGOS subfolder under the server root folder, type /MYLOGOS/. The leading slash (/) makes the URL relative to the current server root. Specify the full path (for example, http://hostname/mylogos/) only if the Web server where the images reside is different from the installation server.

The URL you specify does not have to exist and will not be created automatically. It is simply a text string that *WebPublisher PRO* will insert in front of image file names. For example, if you specify /MYLOGOS/ as the URL, *WebPublisher PRO* will construct URLs such as /mylogos/acme.gif.

---

**Note:** If you plan to keep images in a subfolder under the *WebPublisher PRO* installation folder, use the virtual directory name in the URL. For example, type /DBTW-WPD/MYLOGOS/.

---

The URL you specify will be written to an initialization file called DBTWPUB.INI, located in the installation folder. Later, you can edit that file to add or change locations.

Click **Next**.

12. On the Image URL dialog box, type the URL for a default virtual directory where you will place image files referenced in textbase records.



For example, if you keep textbase record images in the MYIMAGES subfolder under the server root folder, type /MYIMAGES/. The leading slash (/) makes the URL relative to the current server root. Specify the full path (for example, http://hostname/myimages/) only if the Web server where the images reside is different from the installation server.

The URL you specify does not have to exist and will not be created automatically. It is simply a text string that *WebPublisher PRO* will insert in front of textbase image file names. For example, if you specify /MYIMAGES/, *WebPublisher PRO* will construct URLs such as /myimages/car.jpg.

---

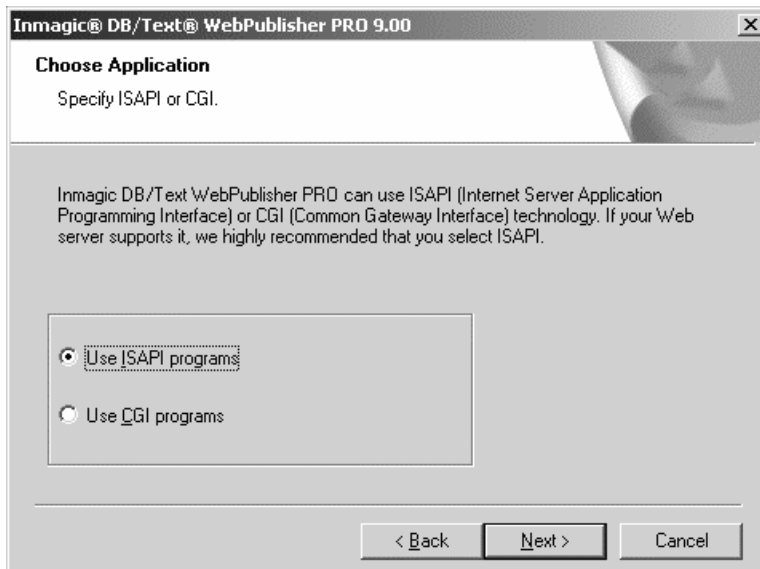
**Note:** If you plan to keep images in a subfolder under the *WebPublisher PRO* installation folder, use the virtual directory name in the URL. For example, type /DBTW-WPD/MYIMAGES/.

---

The URL you specify will be written to an initialization file called DBTWPUB.INI, located in the installation folder. Later, you can edit that file to add or change locations.

Click **Next**.

13. On the Choose Application dialog box, specify whether to use the ISAPI or CGI interface to *WebPublisher PRO*, then click **Next**. We recommend ISAPI. Note that support for both versions is installed. If you need to switch later, run ISAPI.BAT in the JSCRIPT subfolder to switch to using ISAPI, or run CGI.BAT to switch to using CGI.



14. Wait while Setup installs the necessary files.

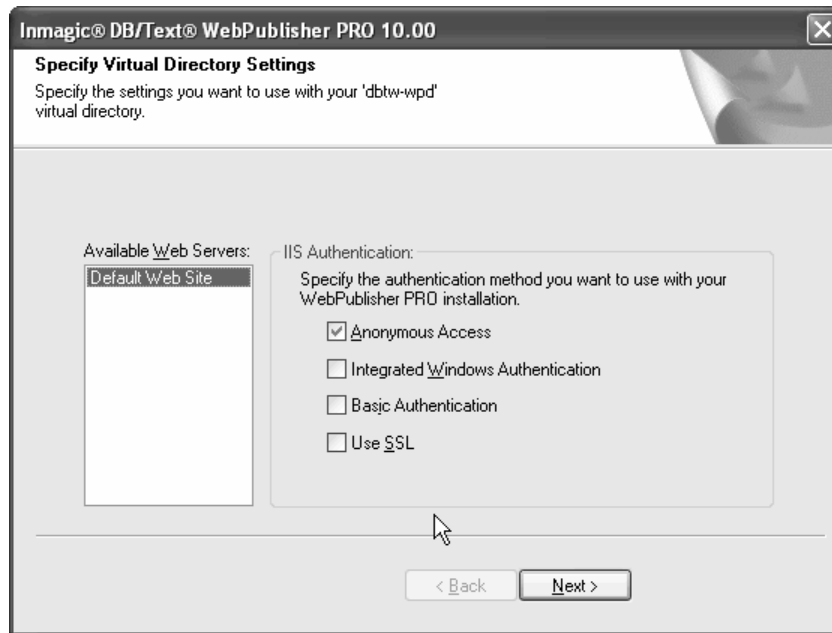
15. On the Specify Virtual Directory Settings dialog box, specify which Web server Setup should use to create and configure the dbtw-wpd and InmagicBrowse virtual directories as well as the authentication method to use.
- **Available Web Servers.** Specify the Web site on which you want to create the virtual directory for *WebPublisher PRO*, which will be called dptw-wpd and the Inmagic Browse application which is used by *WebPublisher PRO*, which is called InmagicBrowse.
  - **IIS Authentication.** Select the authentication method you want to use with *WebPublisher PRO*. For example, you can select Anonymous Access with or without SSL.
- Note:** If the textbases are on a different machine than the Web server, then the **IUSR\_<machine>** account cannot be used. You must use a valid domain account with the proper security permissions.

Click **Next**.

---

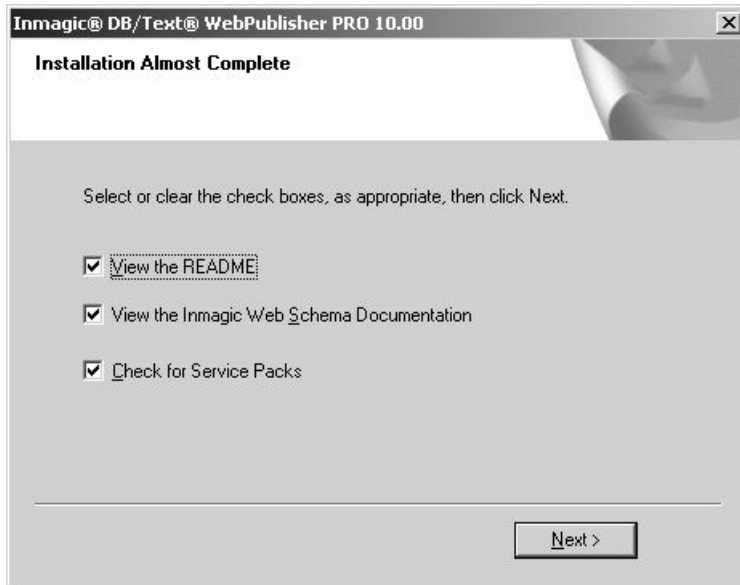
**Note for upgrade installations:** To successfully upgrade, select the Web server where *WebPublisher PRO* virtual directories were originally created.

---

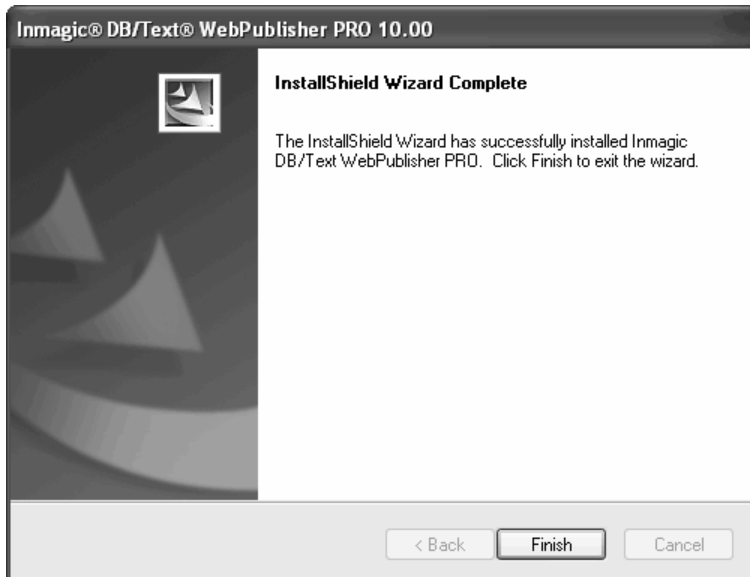


16. On the Installation Almost Complete dialog box, select or clear the check boxes, as appropriate, then click **Next**.
  - **View the README.**
  - **View the Inmagic Web Schema Documentation.**
  - **Check for Service Packs.**

We recommend that you check for the latest service packs.



17. If you selected any of the check boxes in the previous step, read or print the information that appears, then close their windows to continue with the installation/upgrade process.
18. On the InstallShield Wizard Complete dialog box. Click **Finish**.



**Note:** If Setup determines that you have to reboot your computer, the InstallShield Wizard Complete dialog box provides you with an option to restart your computer when you click the **Finish** button. If this is the case, you **must** reboot your computer to complete the installation/upgrade process.

19. If you stopped IIS (the World Wide Web Publishing Service) in step 2, restart it now using the Services option through the Windows Computer Management window. Note that if you rebooted your machine due to the previous step, the service will have been restarted for you.
20. Go to “Setting Windows Permissions” on page 13 to set the permissions needed to use *WebPublisher PRO*.

## Setting Windows Permissions

---

Before you can use *WebPublisher PRO*, the appropriate Windows permissions must be set.

---

**Important!** In addition to the Windows permissions listed above, you must also provide Read access to any folders containing textbases that will be searched, or Full Control if *WebPublisher PRO* will be updating the textbases.

---

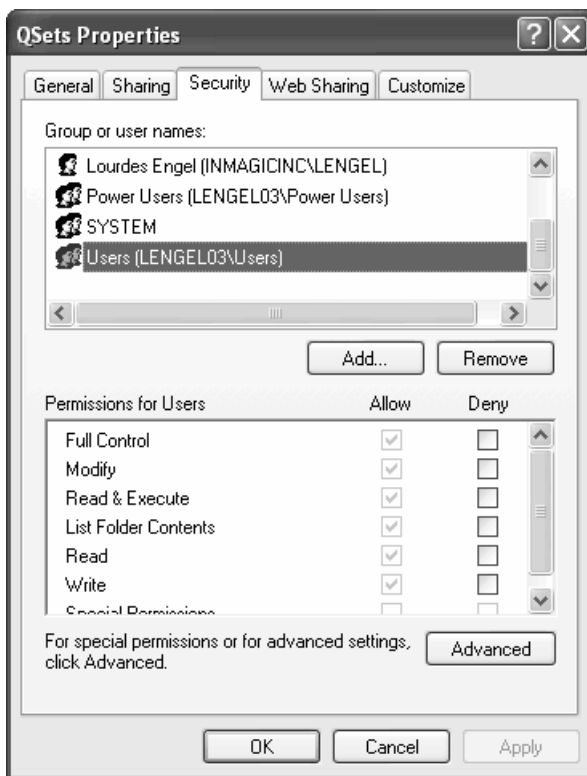
### To set permissions for the QSETS subfolder

Only if you selected Integrated Windows Authentication or Basic Authentication as the IIS authentication in step 15 on page 10, you must set permissions for the QSETS folder.

1. Right-click the QSETS subfolder under the installation folder (for example: C:\Program Files\Inmagic\WebPubPRO\QSETS\) and choose **Properties** from the shortcut menu.
2. On the Security tab, select the appropriate **Group or user name** account, then select the **Full Control** check box.

**Note:** It is assumed the **Group or user name** account already exists. If it does not, you must first add it before proceeding.

---



3. Click **OK**.

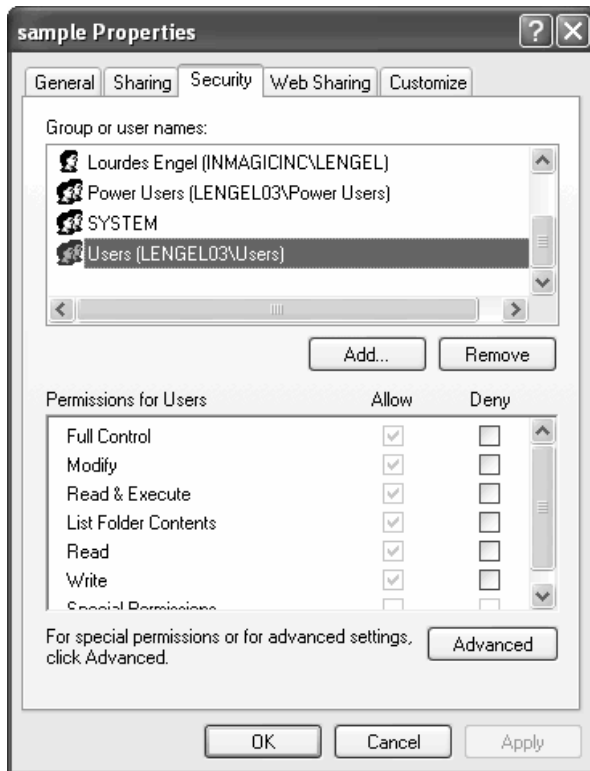
**Note:** If you are on a Windows 2003 Server machine and you selected Anonymous Access in step 15 on page 10, you may have to add the IIS\_WPG account to the QSETS subfolder and also give it Full Control access.

---

## To set permissions for the SAMPLE subfolder

Only if you selected Integrated Windows Authentication or Basic Authentication as the IIS authentication in step 15 on page 10 and you plan to add, edit, and/or delete records in the sample *Cars* textbase, you must give the appropriate **Group or user name** account Full Control access to the SAMPLE subfolder (in which the textbase resides).

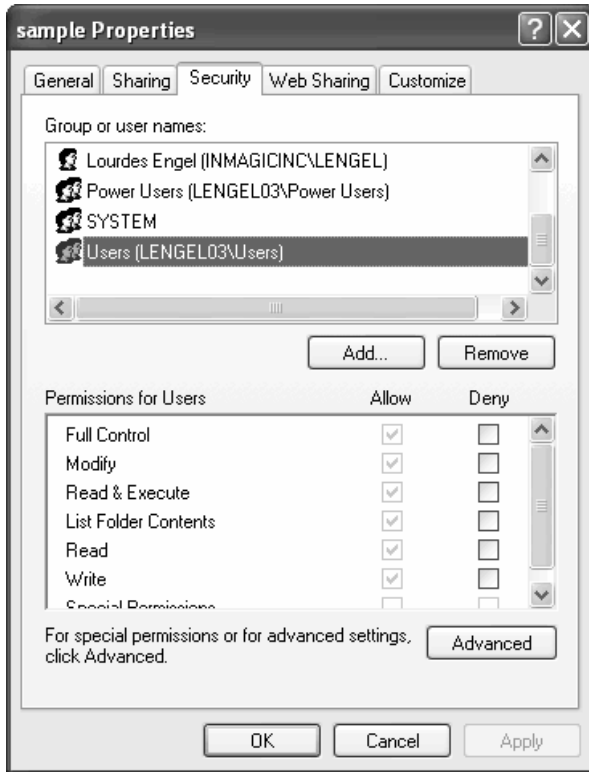
To set this access, follow the instructions for setting permissions for the QSETS subfolder (see above), except in step 1, right-click the SAMPLE subfolder under the installation folder (for example: C:\Program Files\Inmagic\WebPubPRO\SAMPLE\).



## To set permissions for folders containing textbases

You must give for the appropriate **Group or user name** account Full Control access to all folders in which textbases reside.

To set this access, follow the instructions for setting permissions for the QSETS subfolder (see above), except in step 1, right-click the textbase folder (for example: C:\Program Files\Inmagic\WebPubPRO\Textbase\).



---

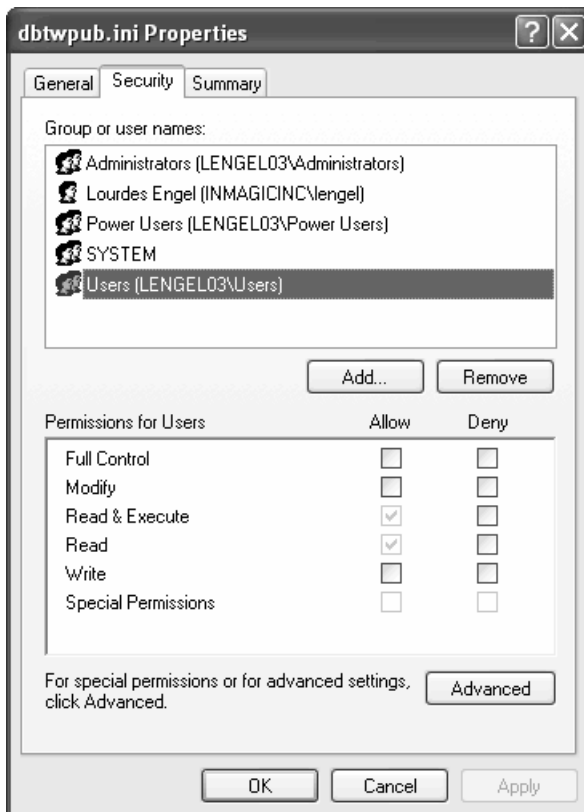
**Important!** You must give the account used for Anonymous Access Full Control to any folder containing a textbase that you plan to modify over the Web.

---

## To set permissions for the DBTWPub.INI file

Only if you selected Integrated Windows Authentication or Basic Authentication as the IIS authentication in step 15 on page 10, you must set permissions for the DBTWPub.INI file.

1. Locate the DBTWPub.INI file in the installation folder, right-click it, and choose **Properties** from the shortcut menu.
2. On the Security tab, select the appropriate **Group or user name** account, then select the **Full Control** check box.



3. Click **OK**.

---

**Note:** If the textbases are on a different machine than the Web server, a local account cannot be used. You must use a valid domain account with the proper security permissions.

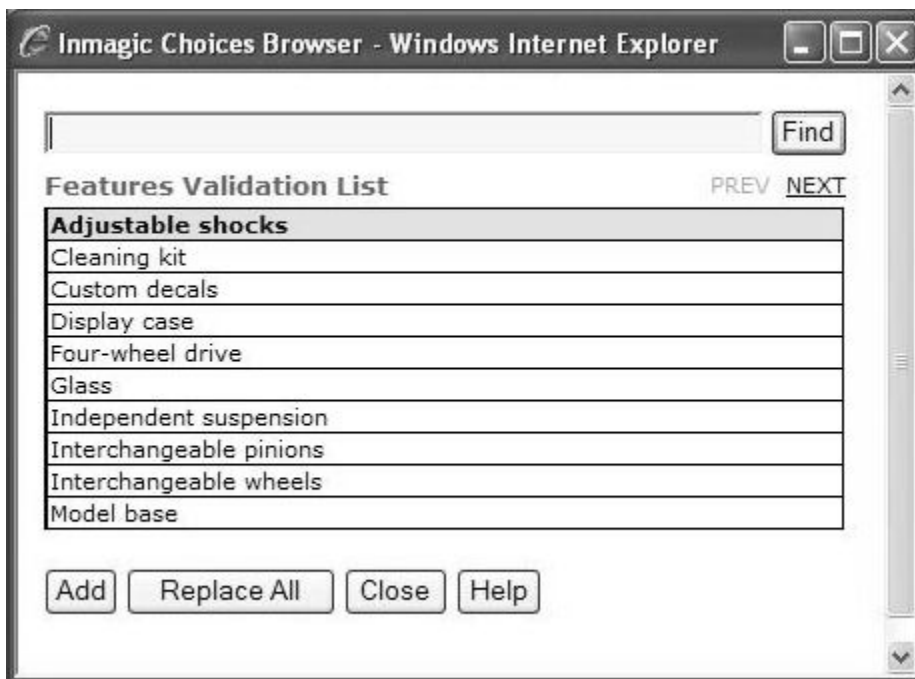
---

## Testing *WebPublisher PRO*

---

After you have completed the installation of the *WebPublisher PRO* product, perform the following test to make sure it is accessible. If any of these steps fails, then there may be a problem with the installation or Web (IIS) setup. If an error message appears anywhere during this test, check the Inmagic Knowledgebase. You can access the knowledgebase through the Inmagic Customer Extranet at <http://support.inmagic.com/downloads/extranet.html>. Make a note of the exact text of the message or print the page in case you need to contact Inmagic Technical Support.

1. Open your Web browser and point to <http://WebServerName/dbtw-wpd/sample/carsqs.htm>. Fill in the name of your Web server where the *WebPublisher PRO* product was installed. The DBTW-WPD virtual directory was created when you installed *WebPublisher PRO*.
2. On the Search Cars page, type an asterisk (\*) in the **Model Type: Assembled or Kit?** box.
3. On the search results page, select **Prices (edit links)** from the drop-down list.
4. Click the first **Edit Record** link (in the **1935 Ford** row).
5. Click the **Features** link. The following illustration shows what the Inmagic Choices Browser should look like.



6. Close the Inmagic Choices Browser.
7. Click the **Submit Record** button—you do not have to make any changes to the record. Verify that the Your record was saved. message appears.

## Documentation

---

For a list of the documentation available for *WebPublisher PRO*, see its README file. You received electronic copies of the *WebPublisher PRO* documentation set when you installed this product. You will find them in the Documentation subfolder of the main installation folder. The documentation set is also available from the Inmagic Customer Extranet at <http://support.inmagic.com/downloads/extranet.html>.

Copyright © 2006 by Inmagic, Inc. All rights reserved.

Inmagic®, the Inmagic logo, DB/Text®, DB/TextWorks®, BiblioTech®, and BiblioTech PRO® are registered trademarks; and Inmagic.net™, BibSpeed™, IntelliMagic™, and PowerPack™ are trademarks of Inmagic, Inc.

Other brand and product names are trademarks or registered trademarks of their respective holders. Use of any other product name does not imply endorsement of that product by Inmagic, Inc.

The information in this document is subject to change without notice and should not be construed as a commitment by Inmagic, Inc., which assumes no responsibility for any errors that may appear in this document.

### WARRANTY

INMAGIC, INC. MAKES NO WARRANTY, EXPRESS OR IMPLIED, INCLUDING BUT NOT LIMITED TO THE WARRANTIES OF MERCHANTABILITY AND FITNESS. INMAGIC, INC. SHALL NOT BE LIABLE FOR ANY LOST PROFITS OR ANY OTHER INCIDENTAL OR CONSEQUENTIAL DAMAGES. IN PARTICULAR, INMAGIC, INC. SHALL HAVE NO LIABILITY FOR ANY DATA OR PROGRAMS STORED OR USED WITH THIS PRODUCT, INCLUDING THE COSTS OF RECOVERING SUCH PROGRAMS OR DATA.

U.S. GOVERNMENT: If Licensee is acquiring the software on behalf of any unit or agency of the U.S. Government, the following shall apply:

(a) For units of the Department of Defense: RESTRICTED RIGHTS LEGEND: Use, duplication or disclosure by the Government is subject to restrictions as set forth in subparagraph (c)(1)(ii) of the Rights in Technical Data Clause at DFARS 252.227-7013. (b) For any other unit or agency: NOTICE - Notwithstanding any other lease or license agreement that may pertain to, or accompanying the delivery of, the computer software and accompanying documentation, the rights of the Government regarding its use, reproduction and disclosure are as set forth in Clause 52.227-19(c)(2) of the FAR.

Contractor/Manufacturer is Inmagic, Inc., 200 Unicorn Park Drive, Fourth Floor, Woburn, MA 01801, U.S.A.

Questions regarding any Inmagic product should be addressed to Inmagic, Inc.

Inmagic, Inc.  
200 Unicorn Park Drive  
Fourth Floor  
Woburn, MA 01801 U.S.A.  
Telephone: 781-938-4444 or 800-229-8398  
Fax: 781-938-4446  
<http://www.inmagic.com>

### Contact Inmagic

Technical Support Assistance	Email: <a href="mailto:support@inmagic.com">support@inmagic.com</a> Phone: 800-229-8398, Press 3
General company, product, and services questions	Email: <a href="mailto:CustomerSvc@inmagic.com">CustomerSvc@inmagic.com</a> Phone: 800-229-8398, Press 1
Sales, product pricing, and custom solution questions	<a href="mailto:sales@inmagic.com">sales@inmagic.com</a>
Product feature requests	<a href="mailto:wishlist@inmagic.com">wishlist@inmagic.com</a>

1206