



Inmagic[®] *Genie* Express Technical Guidelines

Inmagic *Genie* Express

Corporate information centers have changed dramatically over the last few years. The regular use of the Internet as a research tool has permanently altered the way business users interact with information. As a result, knowledge workers are increasingly demanding library services that offer Web-based capabilities unavailable in traditional Integrated Library Systems (ILS). These requirements include online access to images, unstructured documents (e.g., Microsoft[®] Word, PDF, and Microsoft Excel) and physical objects, as well as to traditional library materials such as books and serials.

Inmagic *Genie* Express is a Web-based catalog system designed for information professionals seeking to manage and provide efficient access to both traditional and non-traditional library materials. *Genie* Express is based on .NET technologies and Microsoft SQL[™] Server. *Genie* Express can be deployed quickly and cost-effectively with minimal support from your IT staff.

If you have any questions regarding information in this document, please contact your Inmagic account executive at 800-229-8398 or your local Inmagic reseller.

Operating Environment Guidelines

Windows client

Several administrative tasks are performed through a Windows client. The minimal Windows client operating requirements for *Genie* Express are:

Processor	Pentium or compatible, 330 MHz minimum
Memory	256 MB
Operating System	One of the following: <ul style="list-style-type: none">• Windows Server 2003 with SP1 or later• Windows 2000 Server with SP4 or later• Windows XP PRO with SP2 or later
Software	Inmagic CS/TextWorks Administration program

Web server specifications

- *Genie* Express supports IIS as the Web server
- *Genie* Express can be used with the following browsers:
 - Microsoft Internet Explorer version 6.0 or greater
 - Firefox is supported for the OPAC, for searching and viewing results
- *Genie* Express supports ISAPI
- Microsoft XML Core Services 4.0 SP2 will be automatically installed during setup, if not already installed
- MDAC version 2.7 SP1 or greater is required
- The .NET framework version 2.0 is required

Processor	Pentium or compatible, 860 MHz
Memory	At least 512 MB recommended
Hard Drive	500 MB available disk space minimum, 1 GB recommended
Operating System	One of the following: <ul style="list-style-type: none"> • Windows Server 2003 with SP1 or later • Windows 2000 Server with SP4 or later
Software	<ul style="list-style-type: none"> • Inmagic <i>Content Server</i> software (CS/TextWorks and CS/WebPublisher PRO) • Microsoft Internet Information Services (IIS) <ul style="list-style-type: none"> ○ Microsoft Internet Information Services (IIS) version 5.0 (Win2000) ○ Microsoft Internet Information Services (IIS) version 6.0 (Win2003) • Browser <ul style="list-style-type: none"> ○ Microsoft Internet Explorer version 6.0 or greater ○ Firefox is supported for the OPAC, for searching and viewing results • Microsoft .NET Framework v2.0

Database server specifications

The database is used to store the Inmagic *Genie* Express databases (textbases). The Database server requirements vary depending on the number of concurrent users, the type of content that is to be maintained: meta-data or bibliographic data only, full-text records, etc. Inmagic recommends that you discuss your requirements with an Inmagic technical representative in order to determine the minimum system configuration that will best meet your needs.

Processor	Pentium or compatible, 1.6 GHz
Memory	At least 512 MB recommended
Hard Drive	<p>Database</p> <ul style="list-style-type: none"> • Workgroup Configuration <ul style="list-style-type: none"> ○ SQL Server Express 350 MB ○ MSDE requires 44 MB • Standard Configuration <ul style="list-style-type: none"> ○ SQL Server 2005 requires 250 MB for a typical installation. ○ SQL Server 2000 requires 250 MB for a typical installation. <p>Additional disk space is required for the textbases. The size depends on the projected amount of data.</p>
Operating System	<p>One of the following:</p> <ul style="list-style-type: none"> • Windows Server 2003 with SP1 or later • Windows 2000 Server with SP4 or later • Windows XP PRO with SP2 or later
Software	<p>Database</p> <ul style="list-style-type: none"> • Workgroup Configuration <ul style="list-style-type: none"> ○ SQL Server Express ○ MSDE SP3a or greater • Standard Configuration <ul style="list-style-type: none"> ○ SQL Server 2005 ○ SQL Server 2000
Drive	CD-ROM drive

Single server specifications

If the *Genie* Express application and all its components will reside on a single server, the following are the recommended specifications. It is suggested that the database server be dedicated to the *Genie* Express application. It is used to store the Inmagic *Genie* Express databases (textbases). You should discuss your requirements with an Inmagic technical representative in order to determine the minimum system configuration that will best meet your needs.

- *Genie* Express supports IIS as the Web server
- *Genie* Express is intended to be used with Microsoft Internet Explorer version 6.0 or greater
- *Genie* Express supports ISAPI
- Microsoft XML Core Services 4.0 SP2 will be automatically installed during setup, if not already installed
- MDAC version 2.7 SP1 or greater is required
- The .NET framework version 2.0 is required

Processor	Pentium or compatible, 1.6 GHz
Memory	At least 1 GB recommended
Hard Drive	<p>Database</p> <ul style="list-style-type: none"> • Workgroup Configuration <ul style="list-style-type: none"> ○ SQL Server Express 350 MB ○ MSDE requires 44 MB • Standard Configuration <ul style="list-style-type: none"> ○ SQL Server 2005 requires 250 MB for a typical installation. ○ SQL Server 2000 requires 250 MB for a typical installation. <p>Additional disk space is required for the textbases. The size depends on the projected amount of data.</p>
Operating System	<p>One of the following:</p> <ul style="list-style-type: none"> • Windows Server 2003 with SP1 or later • Windows 2000 Server with SP4 or later
Software	<ul style="list-style-type: none"> • Database <ul style="list-style-type: none"> • Workgroup Configuration <ul style="list-style-type: none"> ○ SQL Server Express ○ MSDE SP3a or greater • Standard Configuration <ul style="list-style-type: none"> ○ SQL Server 2005 ○ SQL Server 2000 • Inmagic <i>Content Server</i> software (CS/TextWorks and CS/WebPublisher PRO) • Microsoft Internet Information Services (IIS) <ul style="list-style-type: none"> ○ Microsoft Internet Information Services (IIS) version 5.0 (Win2000) ○ Microsoft Internet Information Services (IIS) version 6.0 (Win2003) • Browser <ul style="list-style-type: none"> ○ Microsoft Internet Explorer version 6.0 or greater ○ Firefox is supported for the OPAC, for searching and viewing results • Microsoft .NET Framework v2.0
Drive	CD-ROM drive

Accessing data from a textbase or the database

To ensure data integrity, *Genie* Express database tables may not be directly accessed for inserting data. Attempting to write data directly to the *Genie* Express database tables in either the SQL Server Express or MSDE database can corrupt the system's ability to update or utilize the data record, the indexes required for searching, and other important data manipulation capabilities.

Inmagic provides a robust XML API and an ODBC driver that allow for data access.

Inmagic Genie Express Security

Genie Express can be used with either SQL or Windows authentication for database security.

Genie Express supports the use of either Basic Authentication or Anonymous Access on the Internet Information Services (IIS) Web server.

Genie Express recognizes three levels of users: Administrators, Staff, and End Users - via the OPAC. Administrators have full functionality, staff have "add and edit rights," and end users can view the catalog (i.e., they have no ability to make changes).

Genie Express uses a roles-based authentication schema whereby the username (login) determines permissions.

Inmagic Genie Express Back up and Restore Recommendations

- Identify a regular backup strategy that will protect your *Genie* Express data using the Inmagic recommended procedures. Note that data is contained in the database and several flat files.
- Identify applicable on-site and off-site backup strategies.
- Identify what is to be backed up and the frequency of backups.

Inmagic *Genie* Express Architecture

Inmagic *Genie* Express is powered by the Inmagic® *Content Server* back end, which utilizes either a SQL Server Express or MSDE database. Sample *Genie* Express configuration diagrams are shown below.

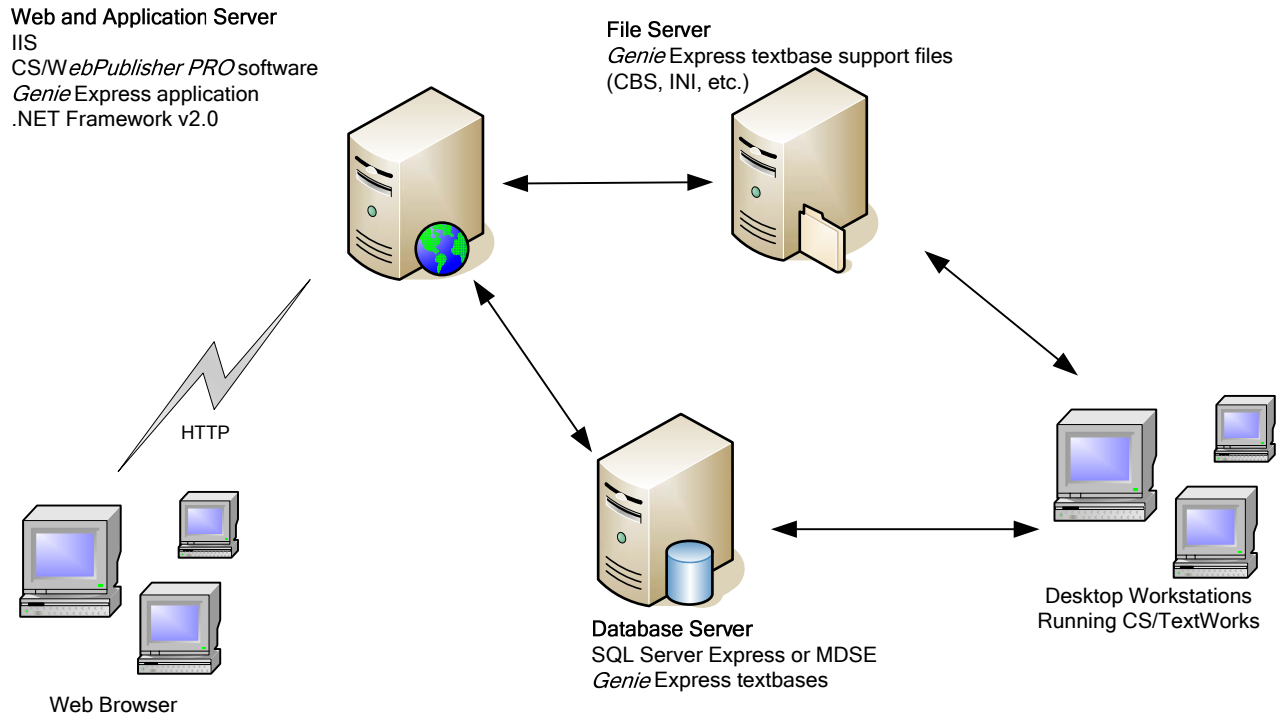


Figure 1: Sample Intranet Configuration

Figure 1 depicts an intranet configuration where all servers reside within a company's intranet. In this example, the Web server, database server, and file servers are pictured separately to clarify the architecture. All components may also reside on a single server.

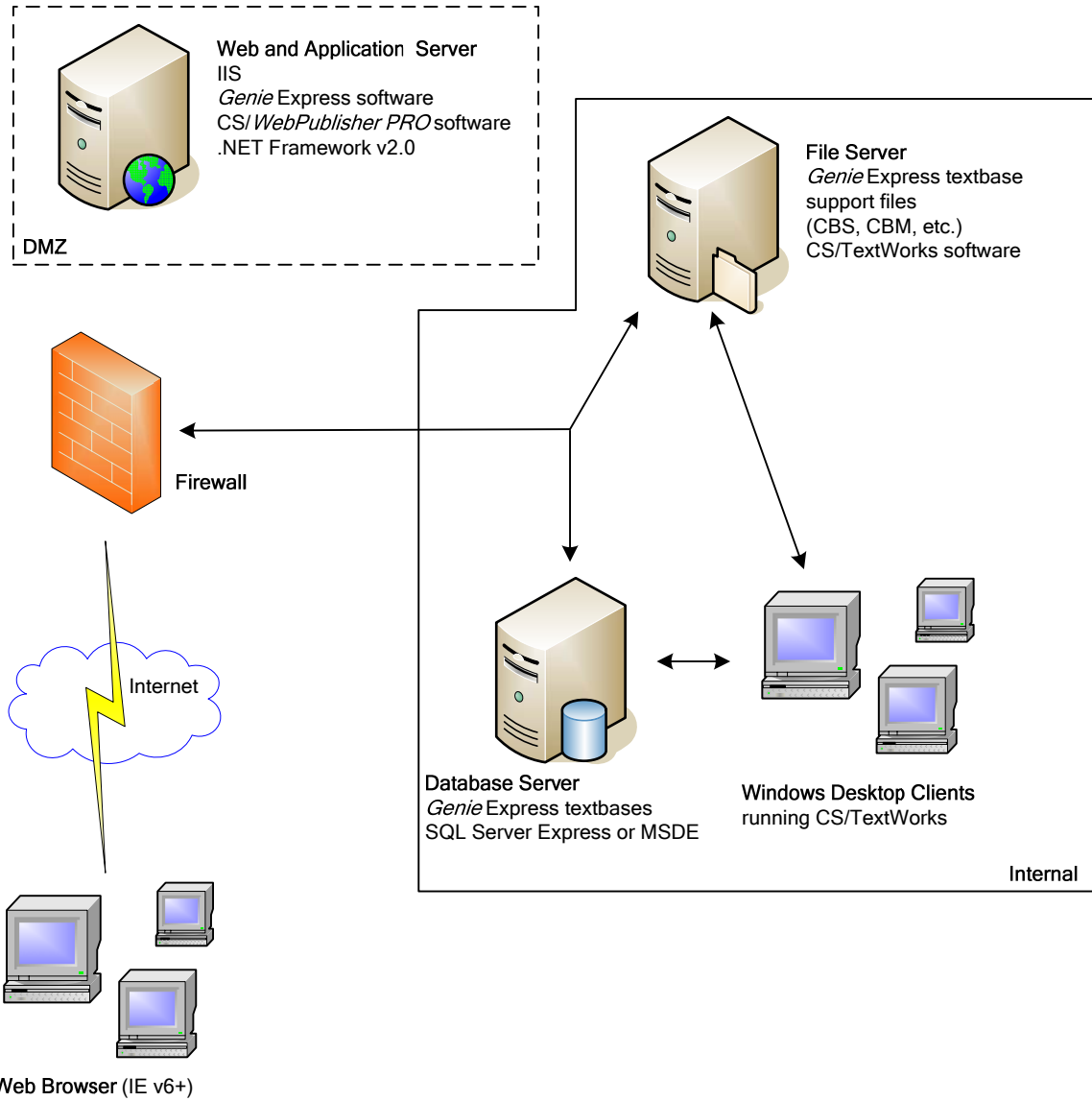


Figure 2: Sample Internet and intranet configuration

Figure 2 depicts Internet and intranet configuration with a firewall.

Web, File Server, and Database Server

IIS
 CS/TextWorks and
 CS/ *WebPublisher PRO* software
 .NET Framework v2.0
Genie Express software
Genie Express textbases and
 support files (CBS, CBM, etc.)
 MS SQL Server Express or MSDE

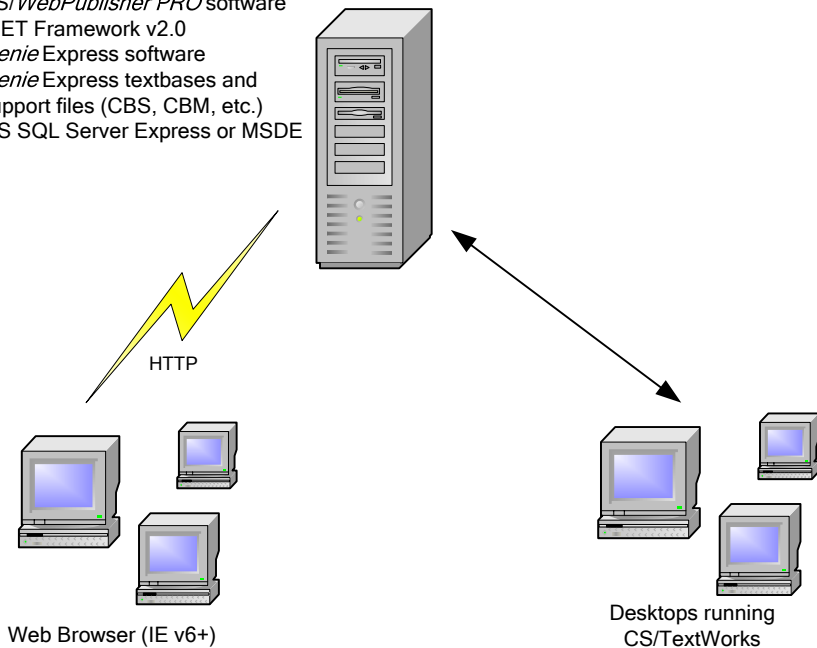


Figure 3: Single Server Configuration

Figure 3 depicts *Genie* Express in a single server installation.

About Inmagic, Inc.

Inmagic is the leading provider of advanced content catalog solutions to corporations and governments worldwide. Since its founding, Inmagic has been a key driver of innovations that help information-intensive organizations gain the greatest value possible from their knowledge assets. Inmagic clients integrate content from multiple internal and external repositories to build specialized content catalogs that manage, categorize, and publish their critical knowledge assets for maximum business advantage. Inmagic solutions are installed in more than 7,000 organizations in over 50 countries. Learn more at www.inmagic.com.